



**REGIONAL SPECIALISED METEOROLOGICAL CENTRE-TROPICAL CYCLONES, NEW DELHI
TROPICAL WEATHER OUTLOOK**

DEMS-RSMC TROPICAL CYCLONES NEW DELHI DATED 04.10.2020

TROPICAL WEATHER OUTLOOK FOR NORTH INDIAN OCEAN (THE BAY OF BENGAL AND ARABIAN SEA) VALID FOR NEXT 120 HOURS ISSUED AT 0600 UTC OF 04.10.2020 BASED ON 0300 UTC OF 04.10.2020 .

BAY OF BENGAL:

1. YESTERDAY'S, LOW PRESSURE AREA OVER NORTHWEST AND ADJOINING WESTCENTRAL BAY OF BENGAL (BOB) OFF ODISHA-NORTH ANDHRA PRADESH COASTS LAY OVER NORTHWEST BOB AND ADJOINING ODISHA COAST AT 0300 UTC OF TODAY, THE 04TH OCTOBER 2020.

AS PER SATELLITE IMAGERY, AT 0300 UTC OF TODAY, THE 4TH OCTOBER SCATTERED LOW AND MEDIUM CLOUDS WITH EMBEDDED INTENSE TO VERY INTENSE CONVECTION LAY OVER CENTRAL BOB. SCATTERED LOW AND MEDIUM CLOUDS WITH EMBEDDED MODERATE TO INTENSE CONVECTION LAY OVER NORTH BOB, SOUTHWEST BOB AND ANDAMAN SEA. SCATTERED LOW AND MEDIUM CLOUDS WITH EMBEDDED WEAK TO MODERATE CONVECTION LAY OVER REST OF BOB.

2. A FRESH LOW PRESSURE AREA IS VERY LIKELY TO FORM OVER NORTH ANDAMAN SEA AND ADJOINING EAST-CENTRAL BOB AROUND 9TH OCTOBER. IT IS VERY LIKELY TO MOVE NORTHWESTWARDS TOWARDS NORTH ANDHRA PRADESH AND ODISHA COAST WITH GRADUAL INTENSIFICATION INTO A DEPRESSION DURING SUBSEQUENT TWO DAYS.

PROBABILITY OF CYCLOGENESIS DURING NEXT 120 HRS:

24 HOURS	24-48 HOURS	48-72 HOURS	72-96 HOURS	96-120 HOURS
NIL	NIL	NIL	NIL	NIL

ARABIAN SEA:

SCATTERED LOW AND MEDIUM CLOUDS WITH EMBEDDED MODERATE TO INTENSE CONVECTION LAY OVER EAST-CENTRAL ARABIAN SEA (AS) OFF KONKAN COAST. SCATTERED LOW AND MEDIUM CLOUDS WITH EMBEDDED WEAK TO MODERATE CONVECTION LAY OVER SOUTH AS.

PROBABILITY OF CYCLOGENESIS DURING NEXT 120 HRS :

24 HOURS	24-48 HOURS	48-72 HOURS	72-96 HOURS	96-120 HOURS
NIL	NIL	NIL	NIL	NIL

PROBABILITY OF CYCLOGENESIS (FORMATION OF DEPRESSION):NIL: 0%, LOW: 1-25%, FAIR: 26-50%, MODERATE: 51-75% AND HIGH: 76-100%

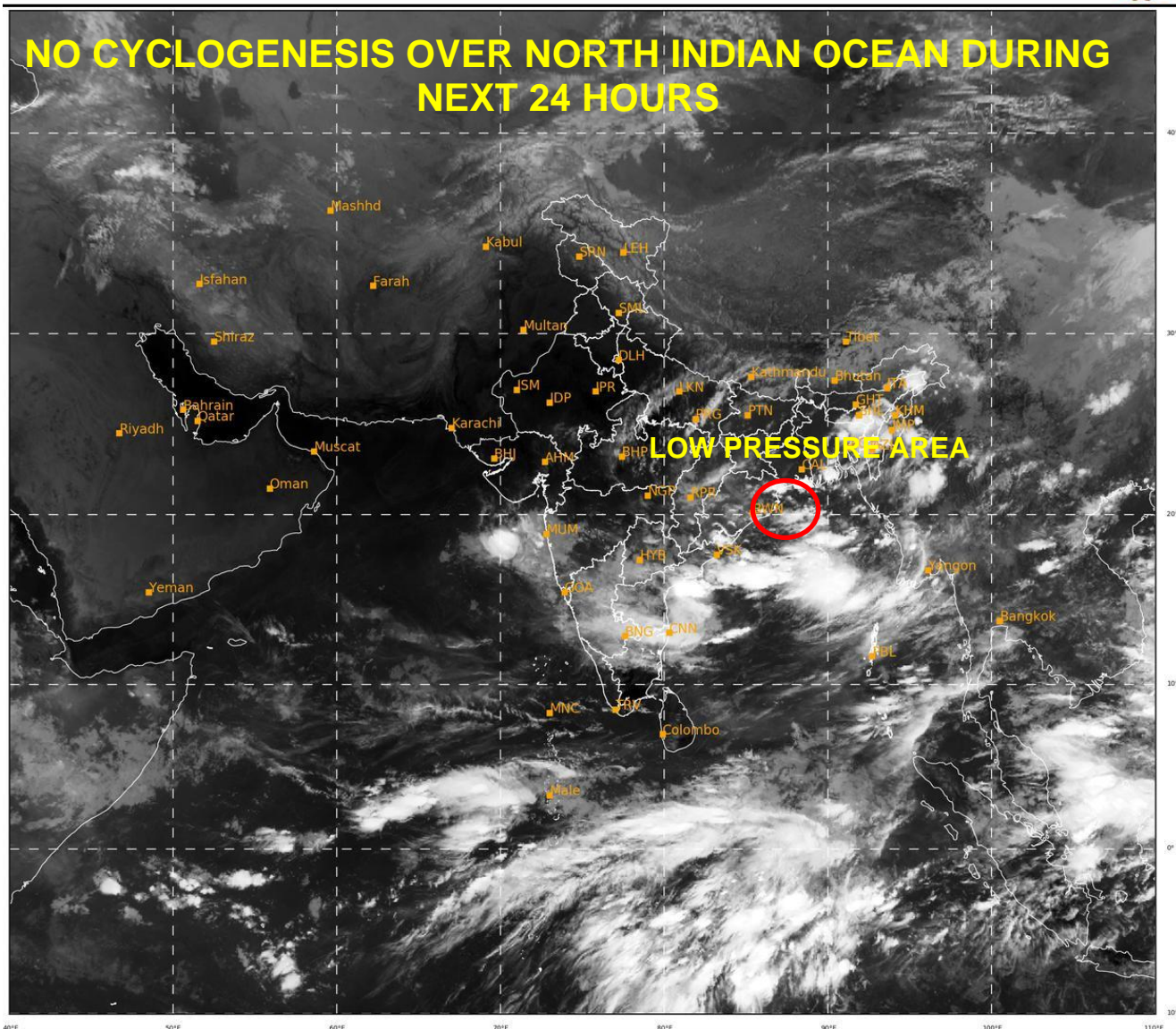
✚ This is a guidance Bulletin for the WMO/ESCAP Panel Member countries,. Please visit respective National websites for Country specific Bulletins

REMARKS:

MOST OF THE MODELS INCLUDING IMD GFS, NCEP GFS, GEFS, ECMWF AND NEPS ARE INDICATING DEVELOPMENT OF A FRESH LOW PRESSURE AREA OVER NORTH ANDAMAN SEA AND ADJOINING EAST-CENTRAL BOB AROUND 9TH OCTOBER WITH NORTHWESTWARDS MOVEMENT TOWARDS NORTH ANDHRA PRADESH AND ODISHA COAST AND GRADUAL INTENSIFICATION INTO A DEPRESSION DURING SUBSEQUENT TWO DAYS. THE GENESIS POTENTIAL PARAMETER INDEX IS ALSO INDICATING POTENTIAL ZONE FOR CYCLOGENESIS OVER NORTH ANDAMAN SEA AND ADJOINING CENTRAL BOB DURING 9TH – 10TH OCTOBER.

SAT : INSAT-3D IMG
IMG_TIR1 10.8 um
LIC Mercator

04-10-2020/(0300 to 0327) GMT
04-10-2020/(0830 to 0857) IST



473

934

IMD, DELHI

PROBABILITY OF CYCLOGENESIS (FORMATION OF DEPRESSION):NIL: 0%, LOW: 1-25%, FAIR: 26-50%, MODERATE: 51-75% AND HIGH: 76-100%

This is a guidance Bulletin for the WMO/ESCAP Panel Member countries,. Please visit respective National websites for Country specific Bulletins